



Dezire Holdings

Railway Station Road, Kelothe, Payyanur (PO)
Kannur, Kerala, India.

Website : www.dezirevillas.com

e-mail : info@dezirevillas.com

Phone : +91 4985 201461

Cell : +91 95 4441 5555, +91 97 4421 5555





Dezire Villas
Homes you desire

DEZIRE Villas

Homes you desire

Dezire Villas are a synthesis of artistic elegance and technological excellence. Contemporarily styled, every one of the fourteen independent villas are captivating with their grandeur. Planned meticulously and realized pain stakingly, these heavenly abodes epitomize urban housing's most modern trends. Designed by acclaimed architects and constructed by experienced and expert builders Desire Holdings, every Dezire Villas possess unique features aimed to enhance the quality of life of the tenants for years to come. Spacious interiors and ample ventilation ensure every home of plentiful light and air. Pure ground water in abundance is assured round the year. The cute swimming pool, game courts, jogging track, cruising through the inspiring stretch of Kavvayi backwaters and the security watch point... all Dezire Villa's special features are designed to give your loved ones a life of maximum urban comforts in a rustic ambience.

Amenities

- ❖ Stylish entrance arch manned by 24x7 security personnel
- ❖ 8M wide black-top road with drains
- ❖ 100M landscaped Jogging track
- ❖ Swimming Pool for Kids
- ❖ Shuttle Court
- ❖ Table Tennis Court
- ❖ Fully equipped Gymnasium
- ❖ Digital Library
- ❖ Air-conditioned multipurpose hall for Ladies and Gents
- ❖ Boating facility
- ❖ Open area for stag to host special events
- ❖ Luxury Duplex Villas (G+1) with independent compound wall and gate
- ❖ Spacious, well-ventilated rooms
- ❖ Spacious terrace and airy balcony for each villa
- ❖ Covered car parking space for 1 car
- ❖ Landscaped lawns for each villa
- ❖ Separate well for each villa
- ❖ Under-ground cabling
- ❖ 24 Hours Power back-up for villas & common amenities
- ❖ Intercom facility connected to the security.





Designer Villas in contemporary style
at a prime serene location in Payyanur



Payyanur

Payyanur blends the traditional with the modern harmoniously while retaining its aristocratic charm; it is vastly becoming a hub of commerce and culture. Possessing a healthy environment for growth and a vibrant economy Payyanur, in the coming Years will witness a burst of development. Commencement of the proposed Cyber Parks and the proximity of the coming airport will definitely enhance the potential of this charming historic town with golden beach & green mountains.

By securing a Deziire Villa in Payyanur now, you will be providing your family with the most prestigious address in town and a sound investment towards their happy future.

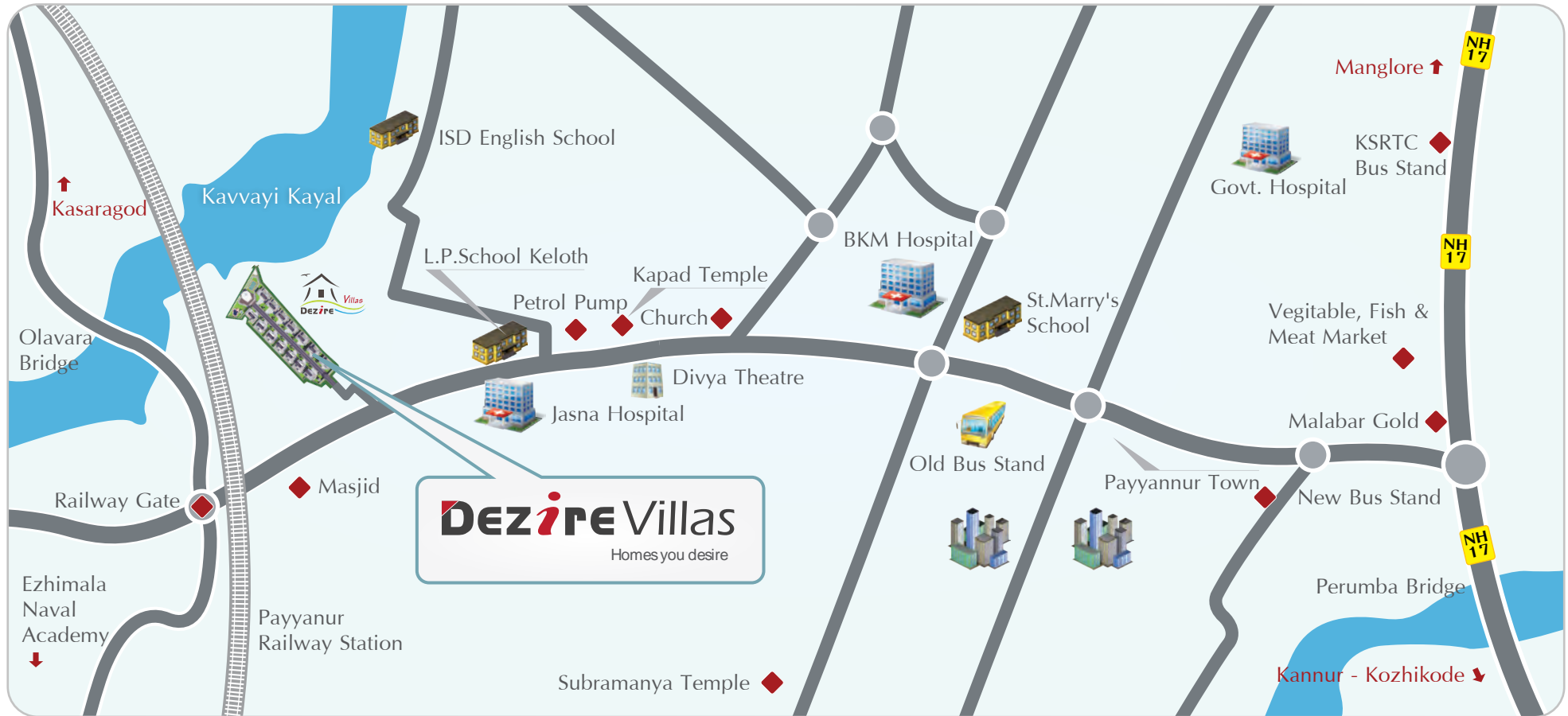


Key Distance

❖ Railway station	800mtr
❖ Bus Stand	2Km
❖ NH 17 Road	4Km
❖ Petrol Pump	300mtr
❖ Hospital	200mtr
❖ Medical College	9Km
❖ Naval Academy	8Km
❖ Temple, Church	800mtr
❖ Masjid	150mtr
❖ Town Center	2Km
❖ Engineering College PNR	9Km
❖ Engineering College Trikaripur	16Km
❖ Cyber Park - Kannur (Eramam)	8Km
❖ Cyber Park - Kasaragod (Cheemani)	16Km
❖ Sea Shore	5Km
❖ Airport Kannur	58Km
❖ Airport Mangalore	130Km
❖ Airport Calicut	150Km
❖ Beach (Madayi)	8Km
❖ Beach (Ettikulam)	8Km
❖ Beach (Bekkal)	38Km
❖ CRPF Camp	12Km

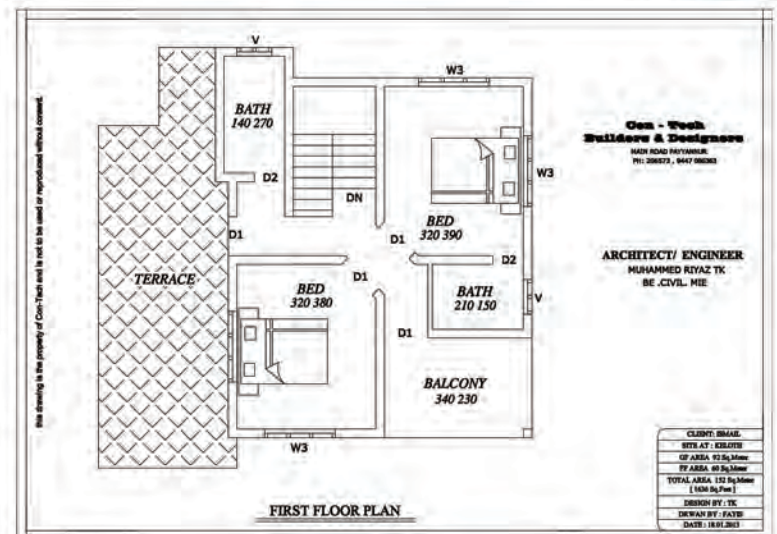
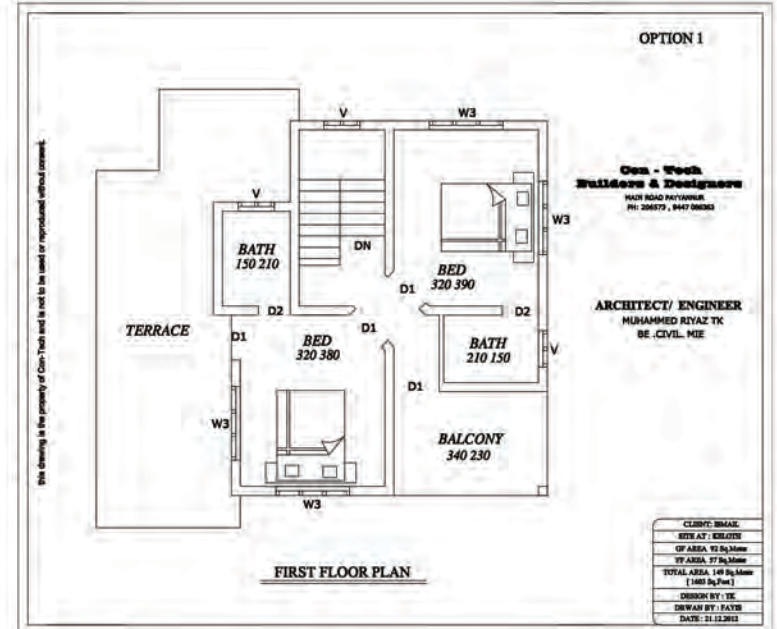
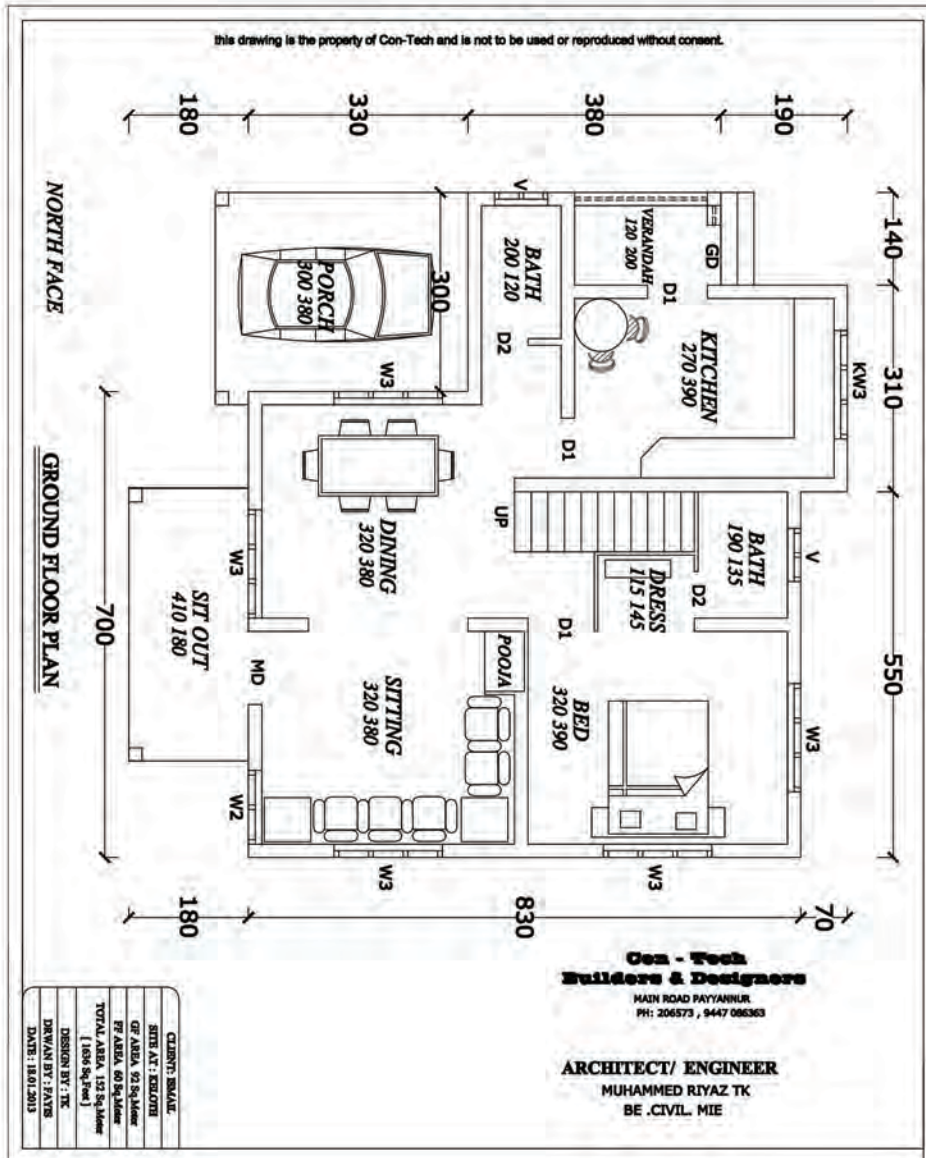
Location Map

Located at the tranquil suburbs of Payyanur, DeziRE Villas are a haven far away from the crowds but so near to all that is dear. All around it is lush greenery and the kavvayi backwaters is just a stone throw away, It is easily accessible from both Railway station and Bus stand. Shopping centre's, hospital, fuel station..... all are in walking distance.



SOOTHE

TOTAL AREA
1600 SQUARE FEET



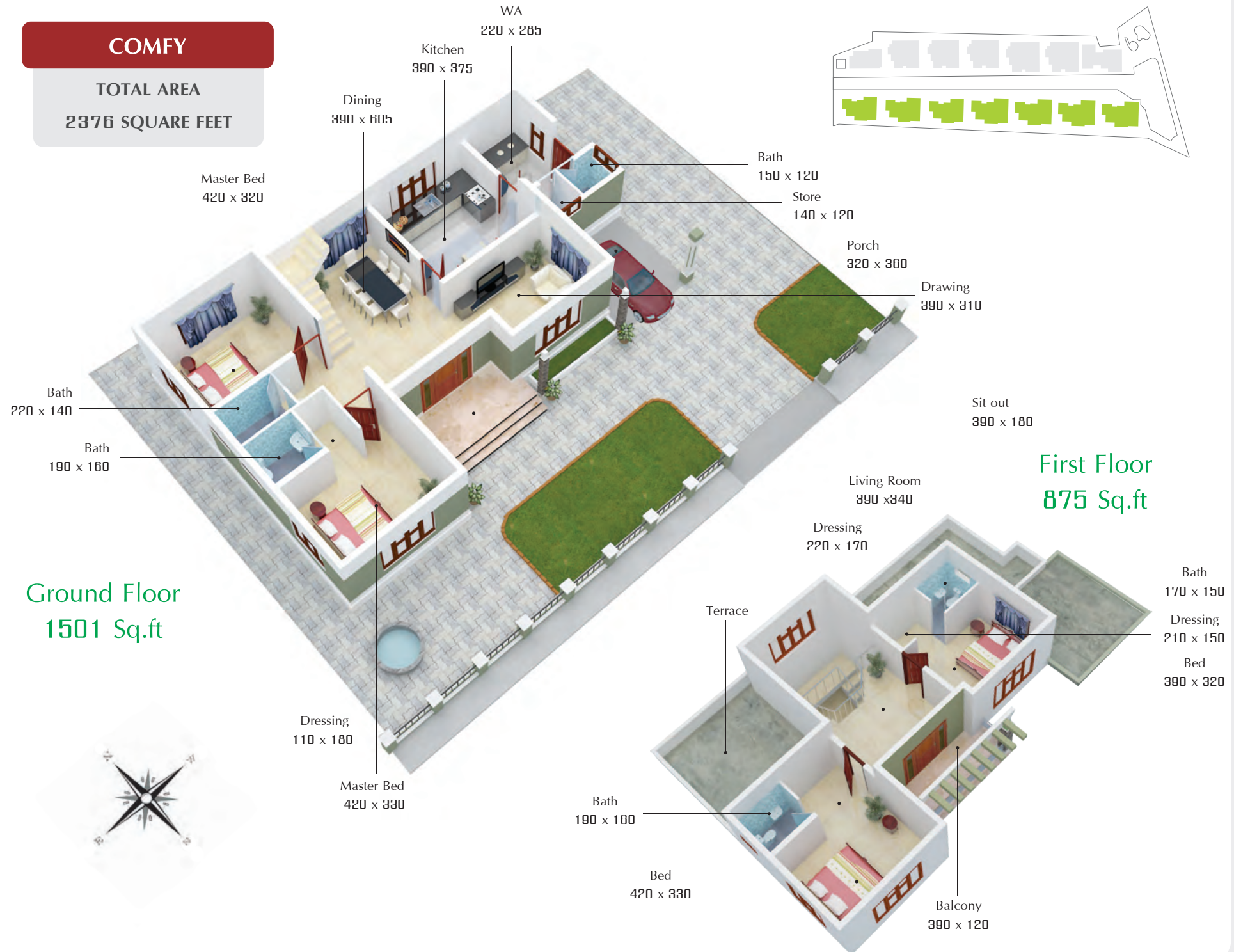
Soothe



“ For that special sense of comfort and security ”

COMFY

TOTAL AREA
2376 SQUARE FEET



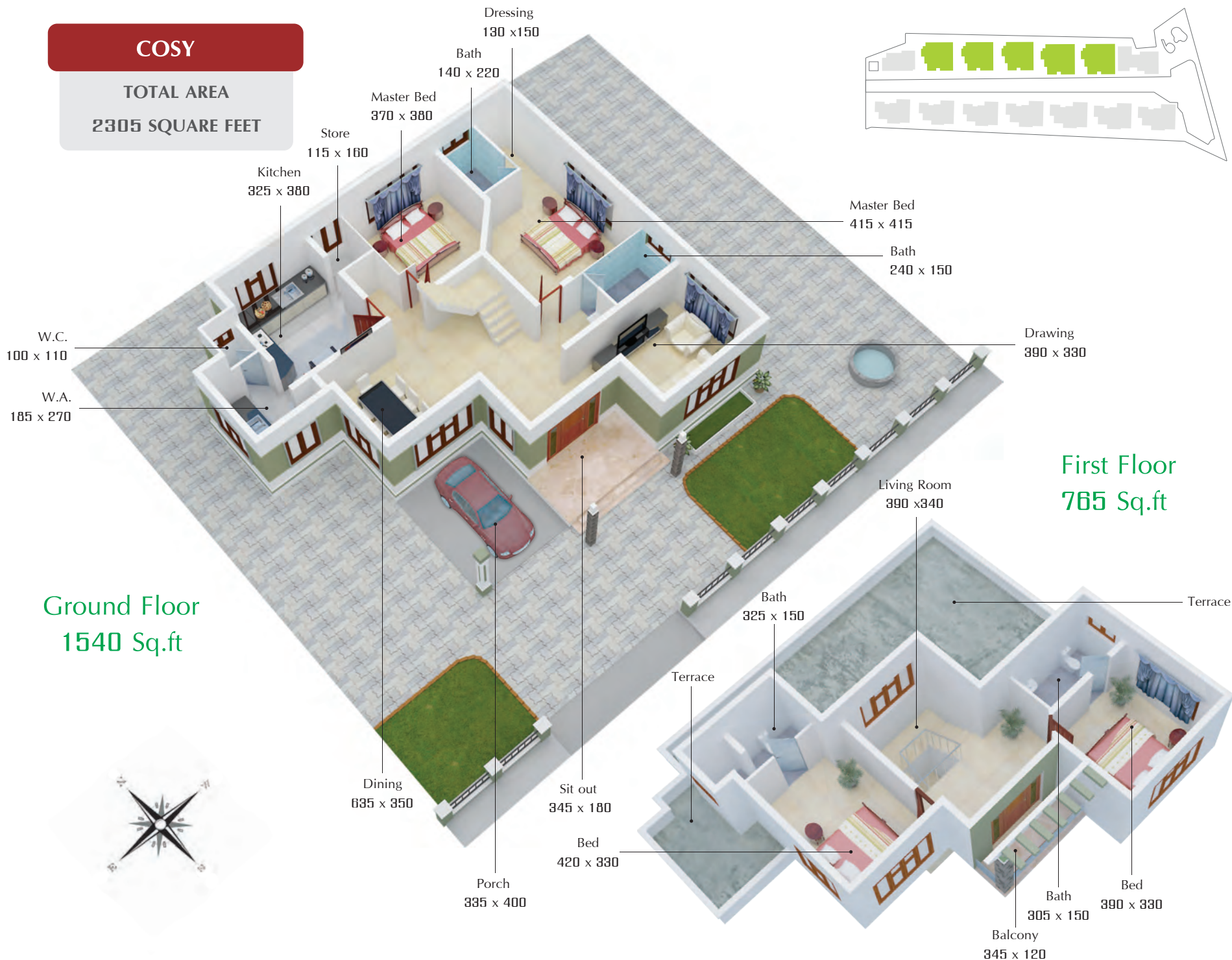
Comfy



“ For that special sense of comfort and security ”

COSY

TOTAL AREA
2305 SQUARE FEET



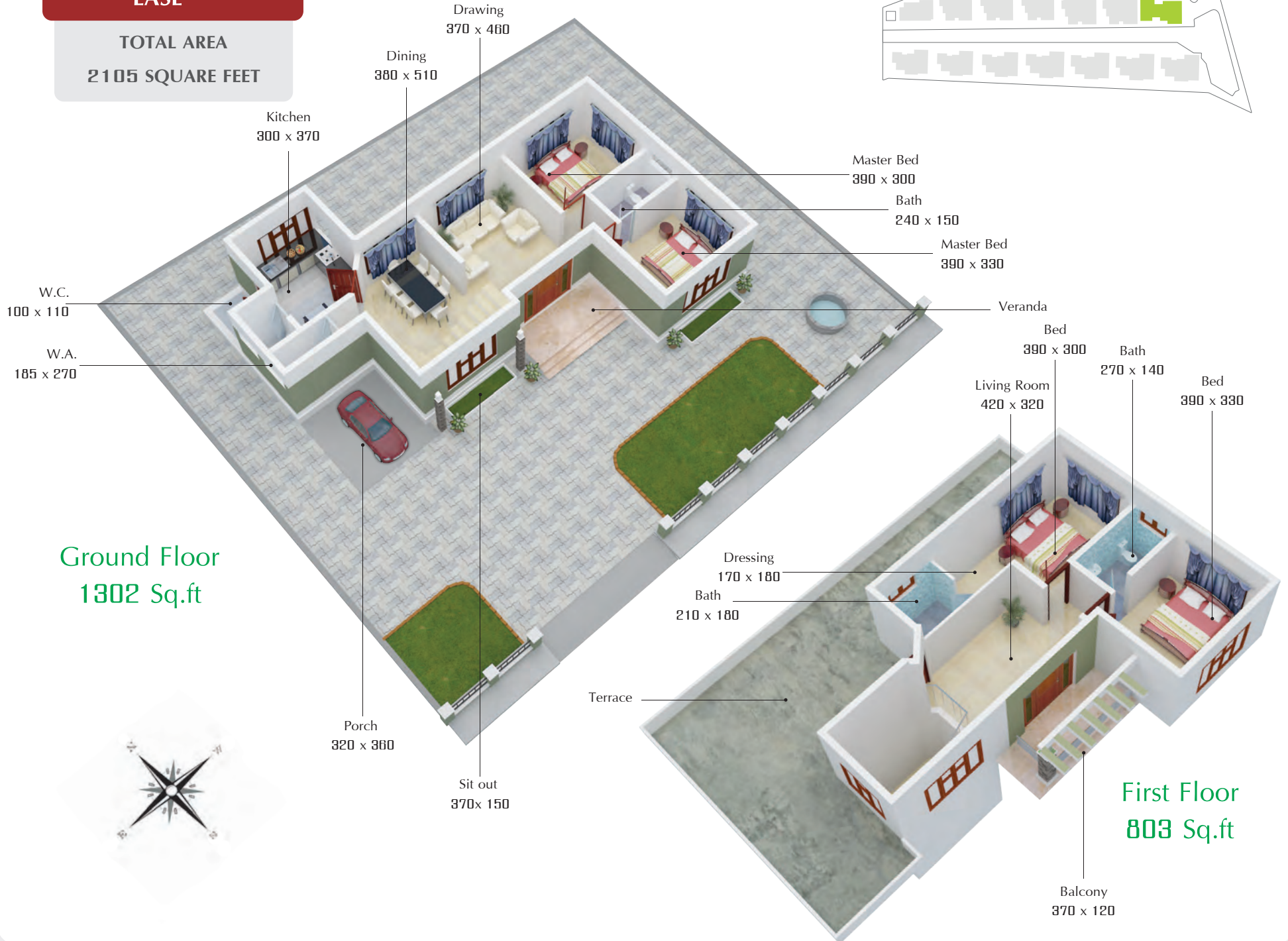
Cosy



“ For those who cherish coziness and closeness ”

EASE

TOTAL AREA
2105 SQUARE FEET



Ease



“Homes designed for easy and happy living”

SERENE

TOTAL AREA
1781 SQUARE FEET



Serene



“Heavenly abodes of peace and prosperity”

Specification

Structure

Laterite stone masonry foundation & superstructure with RCC roofing and belt beam at the ground level.

Flooring

Super quality vitrified tiles for the entire area except toilets & work area. Anti skid ceramic tile flooring for the toilets & work area, Exterior antiskid tiles for the car porch.

Kitchen

Superior quality granite counter with single bowl & drain board SS sink

Glazed tiles above the counter up to 60 cm height . Provision for the water purifier

Bathroom & Sanitary Fittings

Kajaria or **Somany** glazed tiles for walls.

Concealed piping, glazed **Hindware** or **Cera** Sanitary Fixtures.

Premium CP fittings of **Ark**
Plumbing for **Geyser** provided.

Windows & doors

Polished Teakwood entrance Door & Window, Flush internal Doors with hardwood frames.

All other windows & ventilators are with hardwood.

Premium quality glasses for the windows.

Painting

Putty & premium emulsion for all internal walls & ceiling, Exterior emulsion for the board works & CEM finished other exterior wall.

Enamel painting for the windows & door frames.

Electrical

Concealed conduit wiring with **Finolex** cable **GM** premium modular switches adequate light & fanpoints, Lamps plug points controlled by **lcb & mcb** with independent KSEB meters, AC points in all bedrooms. Internet access points, cable TV provision & telephone are provided in all villas.

Power backup

Street lights for the internal road and common area.

Emergency requirements like lights and fans in main area of the villas etc...

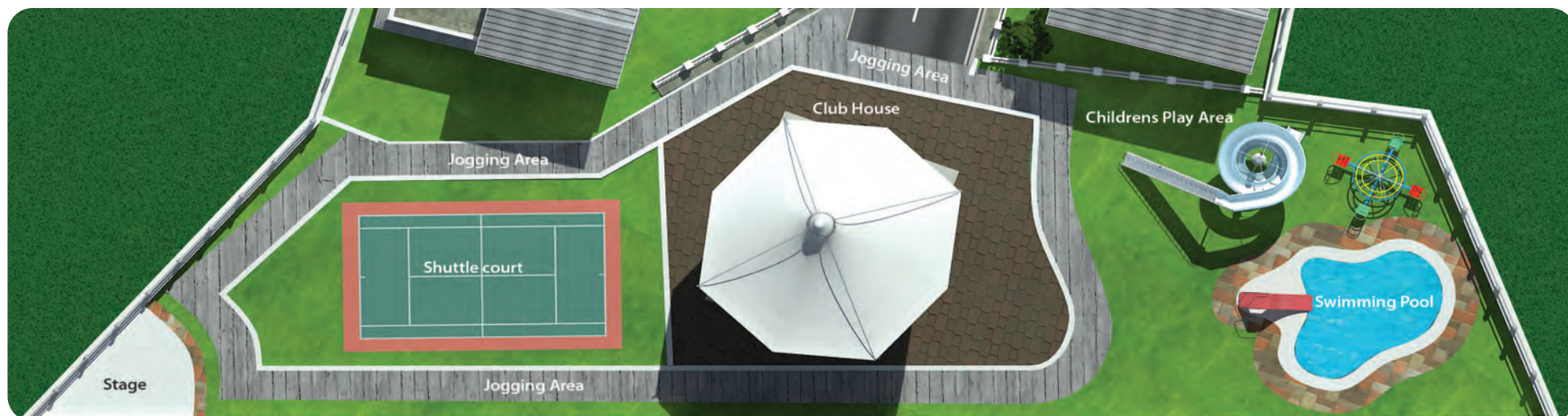
Water supply

Open bore well supplying to individual pump and overhead tank in each villa and municipal water

Security systems

Compound wall all around the property

Guard room near main gate with 24 hours securities





Builder



www.dezireholdings.com

Dezire Holdings

Desire Holdings consist a group of dedicated professionals and a visionary management united in their pursuit of perfection. A passion for providing quality housing solutions to the upwardly mobile people motivate Desire Holdings to undertake their projects with almost integrity and care. Every face is meticulously planned and every details taken care of Schedules are kept exactly and all along, standards are maintained in stringent fashion. Constant insistence on quality of materials, fittings and finishing contributes immensely to the successful realisation of the project.

Desire Holdings is constantly aware that the real foundation of our success is the satisfaction of our customers.

Architect

Engineering Consultancy : Con-Tech Builders, Payyanur
Architect : Mohammed Riyaz T.K.
Contact : +91 9447086363